



FILIA, P.O. Box 135, Aitkin, MN 56431 • FILIALake@gmail.com • FarmIslandLake.org

Election Results

Cindy Chuhanic, Bill Haroldson (President), and Stan Barnes were voted in by the people attending the annual meeting. Thank you for your continued commitment to the stewardship of Farm Island Lake.

Russ Hoppe was elected is a new member of the FILIA board. Thank you, Russ, for joining our team of board members. The list of all board members is at the end of this newsletter.

The 4th of July boat parade is Thursday July 4th

Stop by before noon to get some informational perks about AIS.



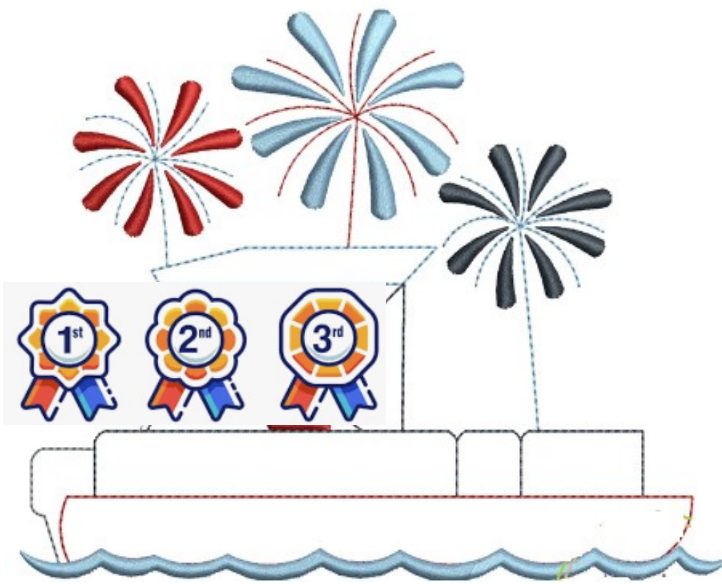
The boat parade meets at the south public access, starts at noon.

Numerous folks have asked that water balloons be curtailed during the parade and always, due to concerns about the impact to the environment, wildlife, and property, and the time spent to take them out of the water and dispose of them.

Have fun decorating your watercraft, be kind and courteous. Remember children are watching this flotilla from the shore and from the parade. Be careful not to follow too closely or make waves that could knock over smaller watercraft.

HAVE FUN! We have about 50-70 boats yearly, and lots of folks watch the parade from the shore. Some boats have been published in the Aitkin Independent Age newspaper!

Boat parade participants are asked to plan to encircle the entire lake for the enjoyment of EVERYONE on shore so that people at the end of the parade (the west side) can see the parade in its entirety.



People have expressed interest in organizing a group to manage the parade so there could be door prizes, etc. The FILIA board does not sponsor the parade but could communicate for this group via the newsletter. Interested folks please contact me or a board member.

MN DNR Creel Survey This Summer



The DNR is performing a creel survey this summer, starting at opener and running through the end of September. Farm Islanders will see DNR creel clerks running around the lake doing boat counts and interviewing anglers to get the information to estimate fishing pressure and harvest.

There have been concerns for some time about issues relating to anglers from Mille Lacs “moving” to Farm Island. This creel should give the DNR an idea of how much of that is occurring. The DNR thanks you all for your cooperation with this project as it will need your collective cooperation to make it successful.

Greetings from Sheriff Dan Guida

Received 3/15/2024 (Reprint from previous newsletter.)

I’m not sure how many would agree with me, but I am ready for some rain!

Last year I dealt with spring flooding and this year we have a low water drought scenario that is causing some major fire concerns. Please use extreme caution around those fun spring campfires. Let’s hope for rainy weekdays....

One fun part of being at the lake is jumping on an ATV or side by side and going for a ride. Aitkin County has an ATV ordinance that allows travel on the far-right side of county roads, 30 MPH, with headlights required. The operator must have a driver’s license, ATV safety certificate, and with anyone under 18 years old a DOT approved helmet. If there are questions and you wish to read the specific ordinance you can just google Aitkin County ATV ordinance and make sure you are reading the most current version.

If there are safety issues on the lake, please immediately call and we will dispatch our team to assist. We will have several Recreational Water Patrol staff that will frequent Farm Island, as well as Deputy Asmus, our senior recreational Deputy. This crew will perform routine safety checks for PFDs, Fire Extinguishers, and any other requirements that exist. If you are unsure of the requirements, a boating guidelines book is put out by the MN DNR every year and is available at the license centers or on the front desk at the Sheriff’s Office.

I want to thank all of you for a great winter. Your calls are always welcome and if you see something, say something and we will do our best to solve the problems!

Sheriff Daniel Guida | Aitkin County | W-218-927-7435 | dan.guida@co.aitkin.mn.us



189 paid members so far!

Membership Update

Thank you to those who have already paid this year's dues!
Current and past member lists are on the website. If you're not sure if you've paid your membership, please email me or check the current list on the website.



An application is at the end of this newsletter and is on the website.

You can also pay dues online at FarmlandLake.org. A member is someone who has paid their dues, payable yearly.

FILIA had 238 members in year 2021 and 235 in 2020, so it would be great to receive dues from those who have not yet paid. If you can't access the application, just drop the \$25 check in the mail and email your contact information to FILIALake@gmail.com

If you have not been a FILIA member in the past, please consider joining this year. If you are already a member, thank you, and we hope you will continue to support the stewardship that FILIA provides.

It does make a difference! A large lake association membership provides a strong influence when it comes to the affairs involving lakeshore ownership, including grant applications, government, county, and local agency activities.

Be sure we have your email to ensure receipt of newsletters sent throughout the year.



FILIA Membership Facts

- 368 property owners as of March 2024
- Newsletters are emailed to 501 recipients
- 223 members is the average membership over the last 5 years
- 33% of members pay additional money toward the AIS Fund
- 33% pay their dues online at FarmlandLake.org
- \$2,362 is the average donated to the AIS Fund over 5 years
- FILIA is a non-profit organization
- You are a member when you pay dues, which are due each year

Check the DNR burning restrictions before lighting a fire.

Fire danger and burning restrictions maps are updated daily.

https://www.dnr.state.mn.us/forestry/fire/firerating_restrictions.html



It has been very windy so be careful when doing any outdoor burning. It may be calm one minute, and then a wind may suddenly kick in and spread your fire. This has happened to a few people this year.

- The FILIA Board Members, to fulfill our mission of stewardship for Farm Island Lake, strive to maintain good communications and collaborative efforts with lake association members, Aitkin County, and state agencies. To name a few - the DNR, Aitkin Area Fisheries, Aitkin County Soil & Water Conservation District, and Invasive Species Specialist, etc.
- When government, local agency and county information is included we are serving as the messenger to keep you informed of their activities concerning Farm Island Lake.
- The FILIA board members act in good faith as volunteers and assume no responsibility for the boat parade or other FILIA activities.

Pond Scum AKA Frog Spittle

https://www.dnr.state.mn.us/aquatic_plants/algae/filamentous_algae.html

Have you seen the filamentous algae on the lake? Though unsightly, green pond scum does not produce toxins.

Common names: Pond scum, water net, frog spittle, moss.

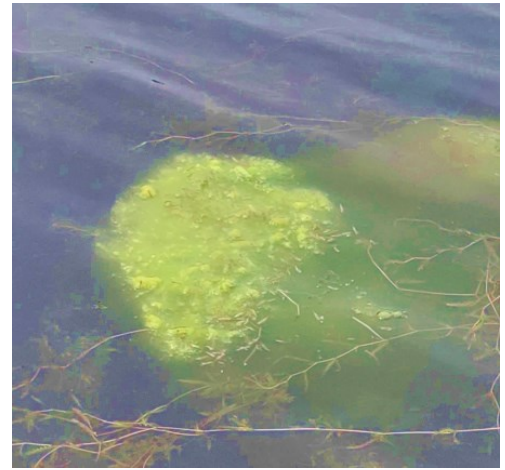
Location: Ponds, shorelines, and backwaters.

Description: Green foam; mass of long, stringy, hairlike strands; usually green in color but may become yellow grayish or brown; individual filaments are a series of cells joined end to end, which give them a thread-like appearance.

Hints to identify: Forms greenish mats on the water surface; begins growth along the water's edges or bottom and rises to the surface as a bubble-filled mass when mature; slimy or cotton-like in appearance; may form hair-like growth on logs, rocks, and other vegetation at lake bottom and on the shoreline. Spirogyra gives water a "grassy" taste and odor.

Importance of plant: Provides cover for small animals such as aquatic insects, snails, and scuds, which are valuable fish food.

Management strategy: See [DNR regulations](#). Nuisance growth of filamentous algae may indicate that a lake has excessive nutrients (usually phosphorus). Adopting preventative measures such as limiting the flow of nutrients into the lake may help reduce the severity of nuisance conditions. For existing nuisances, you may achieve better control if you break up large surface mats before applying an algicide.



Starry Trek Workshop at Farm Island Lake - August 10

August 10 there is a Minnesota Aquatic Invasive Species Research Center (MAISRC) workshop called Starry Trek to find starry stonewort. Meet at the Farm Island Lake north access. From there groups will also visit other local lakes in our area.

Starry Trek Course contacts:

Megan Weber, 763-767-3874, mmweber@umn.edu,

Dan Larkin, djlarkin@umn.edu,

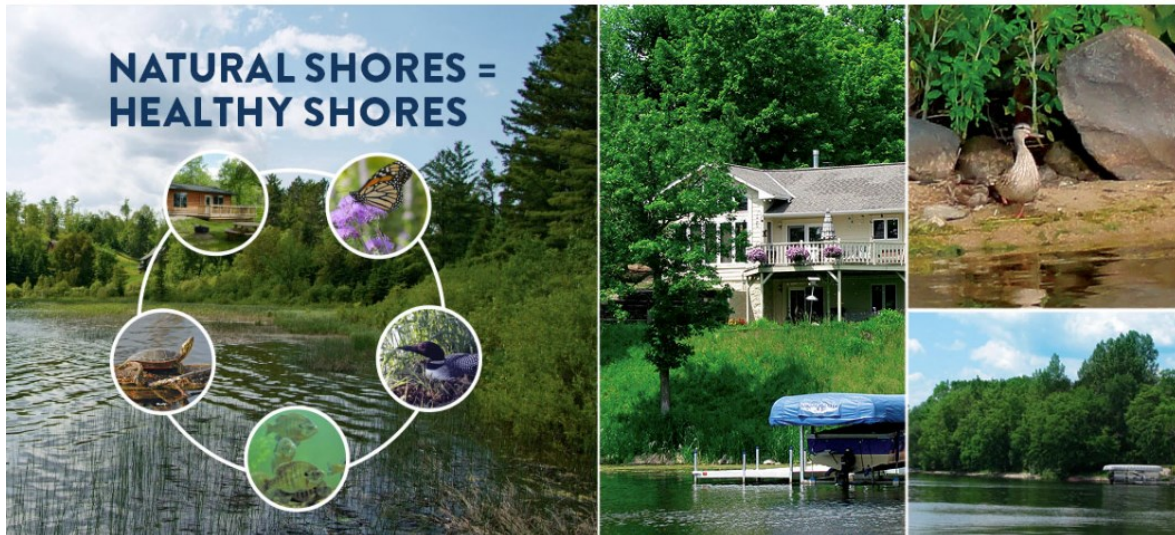
Michelle Isaacson, isaac162@umn.edu

<https://maisrc.umn.edu/starrytrek>



Shoreland Management – Protect the Lake and the Wildlife

https://www.dnr.state.mn.us/waters/watermgmt_section/shoreland/index.html



Maintain and/or restore natural vegetation along your shoreline. Natural vegetation:

- Holds soil in place protecting shorelines from increasingly intensive rain events and rising water levels
- Slows runoff and stores moisture
- Filters out nutrients, which along with rising lake temperatures, accelerates algae blooms
- Provides habitat so species can survive in a changing climate
- Increases property values by keeping lakes clean.

Minnesota law requires water recreationists to:

- **Clean watercraft of all aquatic plants and prohibited invasive species.**
- **Drain** all water by removing drain plugs and keeping them out during transport.
- **Dispose** of unwanted bait in the trash and dispose of bait water.
- **Dry** docks, lifts, swim rafts and other equipment for at least 21 days before placing equipment into another water body.

For more information on the Minnesota law, which holds true whether or not a lake is listed as infested – go to this online link. https://www.dnr.state.mn.us/invasives/preventspread_watercraft.html

Be sure to inform your visitors and neighbors of this important Minnesota regulation, which is also important and necessary to keep our lake clean and free of invasive species.



The walleye slot limit on Farm Island Lake is 16" – 19". Fish this size are to be immediately released. It's a bit confusing - on FIL the slot limit from 16-19 designates the size to NOT be kept.

**Loon Chicks are Hatching!
Watch Ahead!
Give Loons Plenty of Space!**

© Sheila Farrell Johnston

Boat and jet ski strikes are a leading cause of loon deaths. Adults won't dive when protecting chicks and chicks are difficult to see. Always assume loons won't dive!

The 133rd Aitkin County Fair is July 10 – 13.
Free Admission. For a Fair Booklet guide with all the events and times, click here. <https://www.aitkinfair.com/>.
Join in the Fun!

Aitkin County Riverboat Days is August 2 - 4.
 Click here <https://aitkin.com/riverboat-heritage-days-vendor-fair/> for up-to-date events and times.

August 1st - Aitkin Historical Society Garage Sale – Aitkin County Fair Ground 9-3
August 2nd - Aitkin Historical Society Garage Sale – Aitkin County Fair Ground 9-3
August 3rd
 The 5k Dump Run – Farm Island Store 7am Registration 8am Start
 Duck Run – River View Lodge 1pm
 Riverboat Heritage Days Parade with the theme being *Naturally Better* – 3pm
 Riverboat Heritage Days Vendor Fair/Craft and Drafts – 10am – 5pm
 Live Music, Beer Garden, Food, and a Kid's Zone located at the Showboat in the Aitkin County Fair Grounds – 4pm-9pm
August 4th
 Aitkin Flyers Wild Rice Pancake Breakfast Fly-in and Car show – Aitkin Airport 8am-food runs out

"Look deep into nature, and then you will understand everything better."
 – Albert Einstein

Curly-leaf Compared to Native (Clasping) Pondweed

Curly-leaf is similar in appearance to many native pondweeds commonly found in Minnesota waters, such as clasping and floating pondweed. It can be distinguished from other pondweeds based on its serrated leaf edges and unique life cycle. It is generally the first pondweed to come up in spring and dies in mid-summer.

Curly-leaf pondweed generally grows from the shore to water depths of 15 feet, and can grow up to 15 feet tall. It tolerates low water clarity and will readily invade disturbed areas. Minnesota Wildflowers has excellent descriptions and pictures. <https://www.minnesotawildflowers.info/aquatic/curly-pondweed>

Clasping Leaf looks similar to curly leaf, but leaves are wide and wavy, and don't have teeth like curly-leaf. Found submerged in water up to 12 feet.



There are certain areas of Farm Island Lake that have curly-leaf (CL). The FILIA Board Members ask that people with CL work together to determine any action taken. The best time for removal of CL is within weeks of when the ice melts. Trying to harvest the weeds in the spring and summer merely spreads the seeds around. How to proceed with CL control, permitting, etc. is available on the FILIA website. [Click here](#) to learn more at the DNR website and [click here](#) for information on our FILIA website.

"How Well Do You Know Minnesota" - New Videos to Watch!

<https://mnlakesandrivers.org/>



Counties across Minnesota and Minnesota Lakes and Rivers Advocates have produced a unique 'How Well Do You Know Minnesota?' series that provides MN fun facts and information about aquatic invasive species. The series launched May 1st and will run through September 30th with a different video showcased each month.

This video series is presented by Minnesota Lakes and Rivers Advocates and funded collectively from the counties of Murray, Otter Tail, Goodhue, Yellow Medicine, Sibley, Lac Qui Parle, Washington, Cook, Benton, Chippewa, Aitkin, Cass, Lake, Douglas, Stearns, and Polk.

"There are so many water quality issues for which there is no simple solution. But the spread of Aquatic Invasive Species has a simple solution - if everyone thoroughly Cleaned, Drained and Dried their boats and water related equipment after each use, and then inspected it prior to each use in a new water body, AIS would not spread. This is why education is the cornerstone of all efforts to protect our lakes and rivers from aquatic invasive species."~Jeff Forester, Executive Director, Minnesota Lakes and Rivers Advocates.

WATCH and May, June and July videos. Aug and Sept coming soon!

Watch the Videos on YouTube:

May: Never Release

YT :15 <https://youtu.be/ZYHbUYT98gY>

YT :30 https://youtu.be/fcV-9_kaHKM

July: AIS Cleaning Stations

YT :15 <https://youtu.be/DVy0MfyXZ5s>

YT :30 <https://youtu.be/TRLZILrn47Q>

June: AIS Early Detection

YT :15 <https://youtu.be/IFAIKGZFQyw>

YT :30 <https://youtu.be/6EzR0tzxMdM>

Get the Lead Out

Get the Lead Out is an educational program with the Minnesota Pollution Control Agency working to protect and restore the population of common loons and wildlife in Minnesota by reducing their exposure to lead-based fishing tackle.

To learn more about Get the Lead Out, visit <https://lakeadmin.org/get-the-lead-out/> or

Facebook page: <https://www.facebook.com/LeadOutMN/>



If you witness a concern, please call the Aitkin County Sheriff's office at 218-927-7435 and provide as much information as you can. Location and photos and videos really help. Our local law enforcement really does want to hear from you.

Important Phone Numbers

| | |
|--------------------------------------|---------------------|
| Aitkin County Sheriff & Water Patrol | 911 or 218-927-7435 |
| MNDNR Hotline | 651-296-6157 |
| AIS Specialist | 218-203-4354 |

Boating and Fishing Regulations

The DNR Boating and Fishing Regulations are on our website under Useful Info:

<https://www.farmislandlake.org/useful-links>

and are also listed on the DNR website.

<https://files.dnr.state.mn.us/rlp/regulations/boatwater/boatingguide.pdf>



When government, local agency and county information is included we are serving as the messenger to keep you informed of their activities concerning Farm Island Lake.

Loon Watch



The first loon chick sighting I received was on June 6th by the south end of Dahle's bay.

If you encounter a sick or injured loon, call 612 226-6571 or 816 516-0759.

Or visit Minnesota Loon Rescue Network

www.facebook.com/MinnesotaLoonRescueNetwork

Or call Wild & Free in Garrison at 320-692-5417

There are 12,000 loons in Minnesota.

Aitkin County Planning and Zoning

If you are building, remodeling or working on shoreline, contact Aitkin County at 218-927-7342 or their website to be sure you are up-to-date on their codes. <https://www.co.aitkin.mn.us/departments/enviro-svcs/enviromentalSvcs.html#gsc.tab=0>

Lawns to Legumes pollinator 2025 habitat grants available

Aitkin Independent Age, June 12, 2024

The Minnesota Board of Water and Soil Resources (BWSR) is accepting applications for spring 2025 Lawns to Legumes pollinator habitat grants.

The program aims to increase habitat for at-risk pollinators in residential settings across the state by providing people with reimbursement-based funding, workshops, coaching and gardening resources.

Anyone who lives in Minnesota and has a yard, deck or other outdoor space for planting can apply to be reimbursed for up to \$400 in costs associated with establishing new pollinator habitat in their yards. The program is available to both Minnesota homeowners and renters. Applications will be accepted through Nov. 30, 2024. If you previously applied for the program, you will need to reapply to be considered for spring 2025 funding.

Apply online at Blue Thumb's website (<https://bluethumb.org/lawnsto-legumes/apply/>). For more information about Lawns to Legumes, visit BWSR's website at <https://bwsr.state.mn.us/l2l>.

Did You Know?

- PWC (jet skis) hours of operation are between 9:30 AM and sunset.
- PWC must travel at slow-no wake speed (5 mph or less) within 150 feet of shore, docks, swimmers, swimming rafts, any moored or anchored watercraft, or nonmotorized watercraft. Exception is when a PWC is launching or landing a water skier by the most direct route to open water.
- It is illegal to chase or harass wildlife, or weave through congested watercraft traffic or jump the wake of another watercraft within 150 feet of that boat.



Minnesota's personal watercraft laws https://files.dnr.state.mn.us/education_safety/safety/boatwater/pwc-brochure.pdf

AIS Brochure

“WORKING TOGETHER FOR A BETTER FARM ISLAND LAKE”

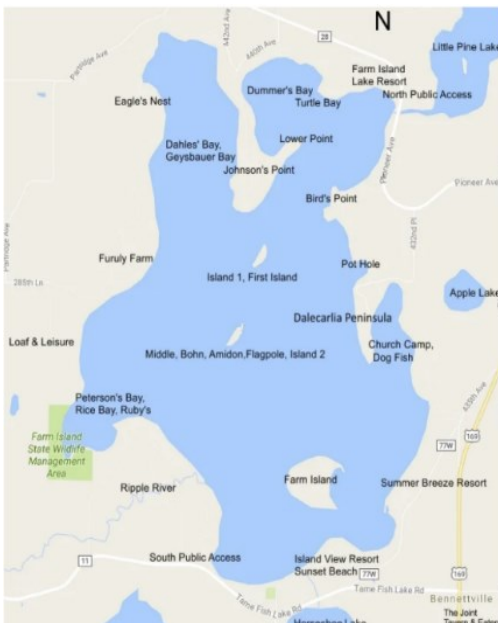
Find the brochure at

<https://www.farmislandlake.org/copy-of-score-your-shore-1>

This is a section title from the FILIA AIS Brochure which is on the website. Click on the link to get the details.

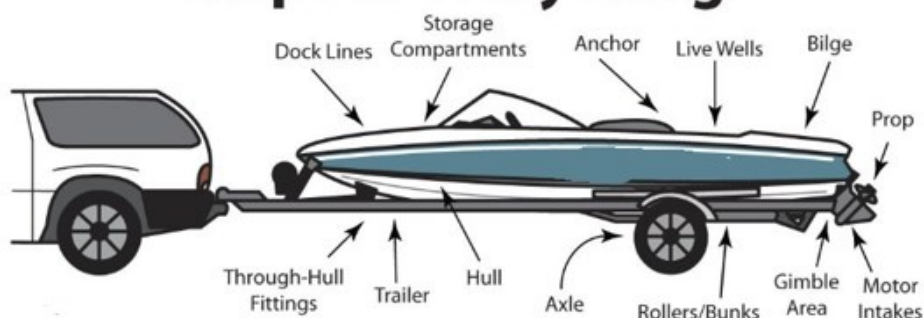
BEST MANAGEMENT PRACTICES TO ENHANCE AND PROTECT THE LAKE AND WILDLIFE

1. Maintain or establish a buffer zone between your yard and the lake.
2. Limit fertilizing and don't fertilize within 50 feet of the lake.
3. Use zero-phosphorus fertilizer.



Printable version of map is on our website.

Before leaving and before launching...
inspect everything!



To prevent the spread of all aquatic species, remember to

- Clean
- Drain
- Dry
- Dispose of water.

2024 Calendar of FILIA Events

| | | |
|----------------------------|------------------------------|---------------------------|
| *Spring Board Meeting | Saturday, May 4, 8:00 am | The Joint Tavern & Eatery |
| Annual Association Meeting | Saturday, June 8, 9-11:00 am | Hazelton Town Hall |
| 4th of July Boat Parade | Thursday, July 4, Noon | FIL South Public Access |
| *Fall Board Meeting | Saturday, Sept 7, 8:00 am | The Joint Tavern & Eatery |

Hazelton Town Hall is located on Hwy 169, a few miles south of Tame Fish Lake Rd.

*Only board members attend the board meetings.

The annual meeting is held the 2nd Saturday of June each year.

BOARD OF DIRECTORS

Bill Haroldson President
Gordon Vetsch V.P.
Cheryl McDonough Treasurer

Cindy Chuhanic
Dennis Kraimer
Stan Barnes

Mike Harrington
Scott Scheele
Russ Hoppe

Contact board members: FILIALake@gmail.com

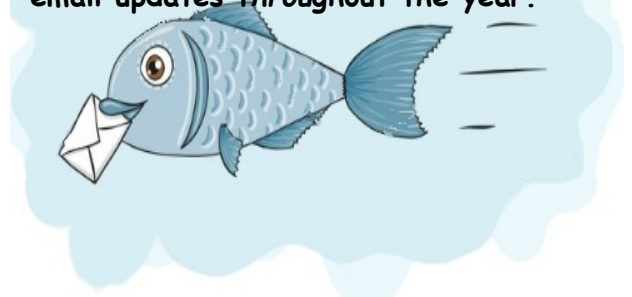
FILIA Website

There is a lot of information on the FILIA website. This site map includes the links to the various pages on the website. FarmIslandLake.org **FILIA Financial Report is on the Administrative page.**

Site Map

- [Home](#) Mission statement, printable map of Farm Island Lake, description
- [Membership](#) Members lists, application form
- [Pay Dues](#) Pay yearly membership dues online with credit card
- [Newsletters/Lake Info](#) Current and past newsletters, Gillnet Survey Results
- [Contact/Calendar](#) List of Board of Directors, Shore Captains, Meeting dates
 - [Local Events](#)
- [Administrative](#) Financial reports, current and past
 - [Meeting Minutes](#)
 - [FILIA Bylaws](#)
- [Aquatic Invasive Species](#)
 - [Score Your Shore](#)
 - [How to identify zebra mussels](#)
 - [Living with zebra mussels](#)
 - [How to combat swimmer's itch](#)
- [Useful Info](#) Aitkin County contacts, etc.
 - [Boating & Fishing Regulations](#)
 - [DNR Permitted Lake Service Providers](#)

Be sure we have your email addresses to ensure receipt of newsletters and email updates throughout the year.



Have a safe and joyous year!

Sincerely,
Cheryl McDonough
Editor, FILIA Newsletter
filiialake@gmail.com
Your comments are welcome.

FILIA
PO Box 135
Aitkin, MN 56431

FarmIslandLake.org

FILIA MEMBERSHIP APPLICATION

FarmIslandLake.org

BECOME A MEMBER AND HELP PRESERVE AND ENHANCE FARM ISLAND LAKE

Dues are **\$25.00** a year per property owner from January to December.

You can pay online at your FILIA website, or bring this form to the annual meeting, or mail it to:

Farm Island Lake Improvement Association (or FILIA)

Date: _____

PO Box 135

Aitkin, MN 56431

Name _____

Home Address _____

No need to write your home address if your correct address is on your check.

Lake Address _____

Phone-best year-round contact phone(s) _____

Email-best year-round contact email(s) _____

Your email addresses will be used to send you newsletters and other FILIA news. It will not be sold or shared.

Additional money for the Aquatic Invasive Species (AIS) Fund \$ _____