

Inspection by the Invasive Species Program

Division of Ecological Resources
Minnesota Department of Natural Resources

Lake: Farm Island **DOW Number:** 1-159 **Date of inspection:** June 13, 2013

County: Aitkin **Observer[s]:** Dan Swanson & Tyler Gilson

Time - On Water: 0930 hours **Off -water:** 1230 hours

Type of inspection: Curly-leaf pondweed inspection

Author[s] of report: Dan Swanson **Date of report:** June 13, 2013

Inspection notes: The Farm Island Lake Association requested that we inspect the curly-leaf pondweed this spring. We searched for curly-leaf pondweed visually along the shorelines by boat (see photo 1). We found curly-leaf pondweed at most of the sites where it was found in the 2009 DNR vegetation survey. A map of the curly-leaf pondweed locations that we found today is in Figure 1. Curly-leaf pondweed was found near the water surface at several locations (see photos 2 & 3). The field notes for this inspection are in Figure 4.

Summary: Curly-leaf pondweed was recorded in Farm Island Lake in July of 1946 by Jim Heuer, Minnesota Division of Game and Fish. The curly-leaf pondweed in Farm Island Lake was surveyed in 2008 and 2009 by the Minnesota DNR and has remained stable, in the same locations, since those surveys. Curly-leaf pondweed was delineated on May 8, 2008, by DNR staff, and a map from that inspection is in Figure 2. An aquatic vegetation survey of Farm Island Lake was surveyed was completed by DNR staff in late May and early June of 2009. A map showing the locations of curly-leaf pondweed from that survey in 2009 is in Figure 3.

Photo 1: Curly-leaf pondweed visually located on the north shore of Farm Island Lake on June 13, 2013



Figure 1. Curly-leaf pondweed locations from the June 13, 2013, DNR inspection.



Figure 2. Curly-leaf pondweed locations from the May 9, 2008, DNR inspection.

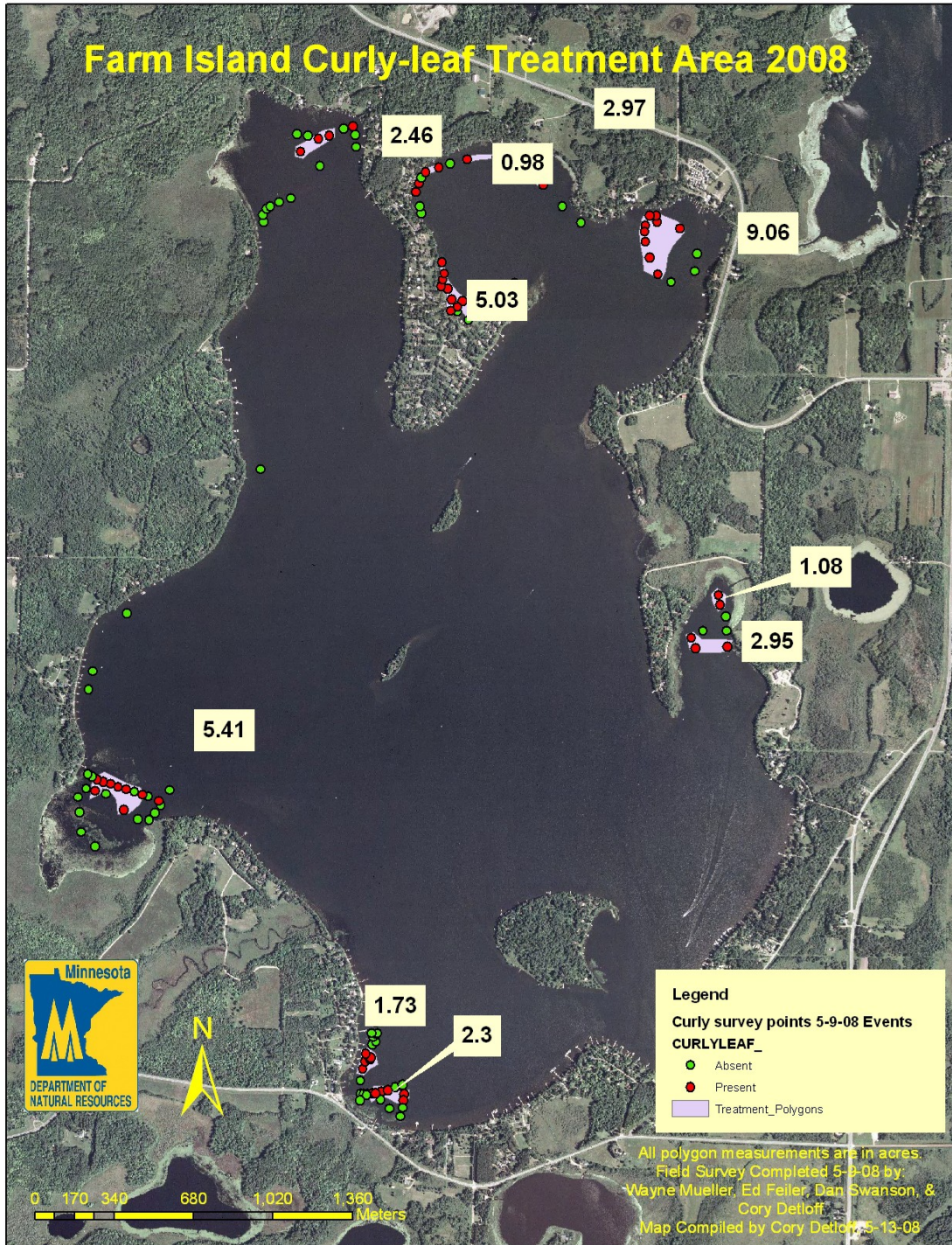


Figure 3. Curly-leaf pondweed locations from the late May and early June, DNR survey.

Aquatic vegetation of Farm Island Lake, Aitkin County, Minnesota, 2009

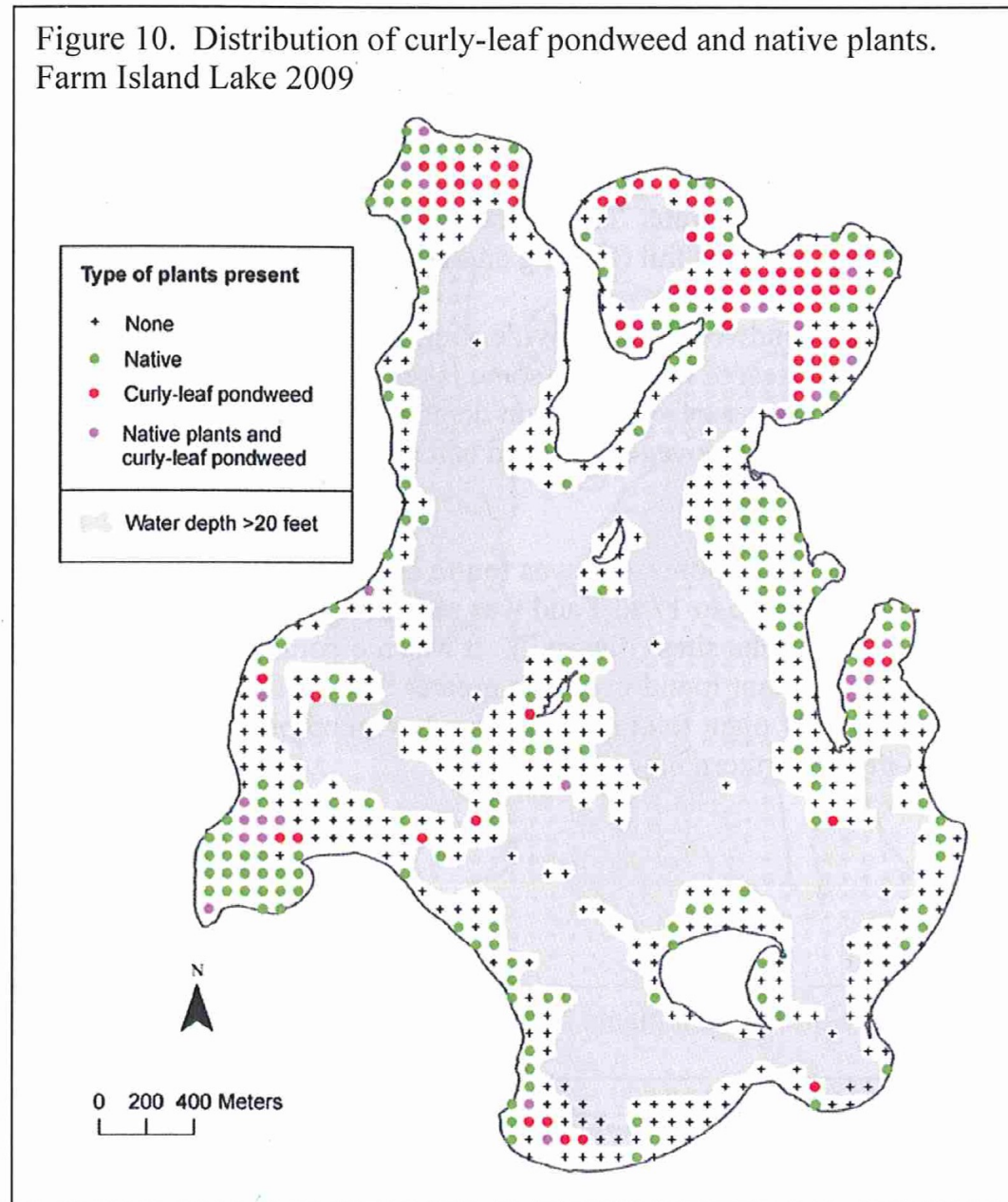


Photo 2. Curly-leaf pondweed visually located in the west bay of Farm Island Lake on June 13, 2013.



Photo 3. Curly-leaf pondweed visually located in the northwest bay of Farm Island Lake on June 13, 2013.



Figure 2. Field Data Sheet from 6-13-13 inspection.

Invasive Species lake survey field sheet

Dan Swanson

Date June 13, 2013 Staff Tyler Gilson

Lake Farm Island County Aitkin DOW # (1-159)

Secchi depth 13' time taken 1210 Loc. taken [Waypoint Number] 185

water temp 64.5°F @ 0930 near P.A.

Mark GPS points where Invasive species found. Note all other species and their density at each point. Use several lines per point if needed. Collect at least one voucher specimen of Invasive species. Keep GPS unit on during the whole survey so there will be a track showing the areas surveyed.

Density ranks: A = abundant (75 – 100 % coverage) C = common (50 – 75%), S = Scattered (25 – 50%) R = rare (1 – 25%).

GPS Point	Depth	Other species/ density	Other species/ density	<i>M. spicatum</i> (Eurasian watermilfoil) density	<i>P. crispus</i> (curly-leaf pondweed) density
001	6.2'	dense clp within 6" to 18" of water surface			✓
002-008	5'-7'	clp near surface			✓
009	8.5'	3 clp plants			✓
Polygon (010-011)	2.5'-4.7'	dense clp on surface or within 6"			✓
		some dense clp is matted on the surface also			
Polygon (072-098)		dense clp on surface			✓
099-111		dense clp on or near the surface			✓
112-170		dense clp on or near surface			✓
171-172		sparse clp 2' from surface			✓
173-174	6.5'	clp cluster near surface			✓
174-184		clp within 2' of surface			✓

Locations of file[s]: I:\EWR\Brainerd Area Office\Invasive_Species_Program\Lake Data\Farm Island\2013 CLP Farm Island